



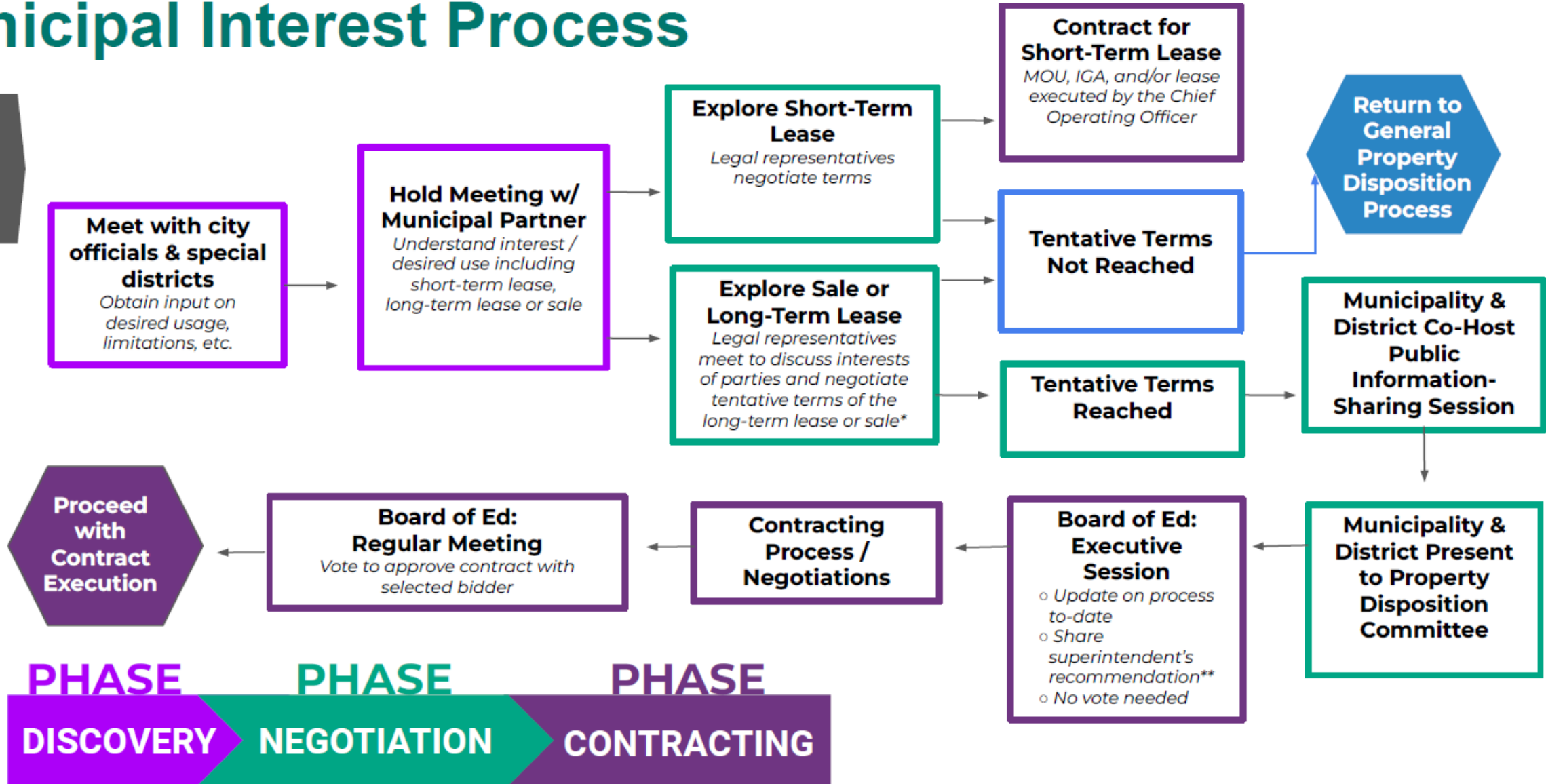
School District Property Disposition



JEFFERSON
COUNTY COLORADO

Municipal Interest Process

Board Votes "Yes" to Surplus
Each surplus property will go through this process



*District receives fair compensation for the asset in order to educate students in Jefferson county, meet its fiduciary obligations to taxpayers, and satisfy its statutory responsibility to reverse deficit spending. Revenue from sale or lease of buildings, per policy [DN](#) will, unless directed otherwise by the Board, be credited to the capital reserve fund. Terms will include that the asset will revert to the District should it no longer be in use by the municipality (or its designee) for the purposes outlined in the lease or sale unless waived by the district. The district may also choose to subdivide the property and include only a building or only land in the sale or long term lease to a municipality (or its designee).

Colorow

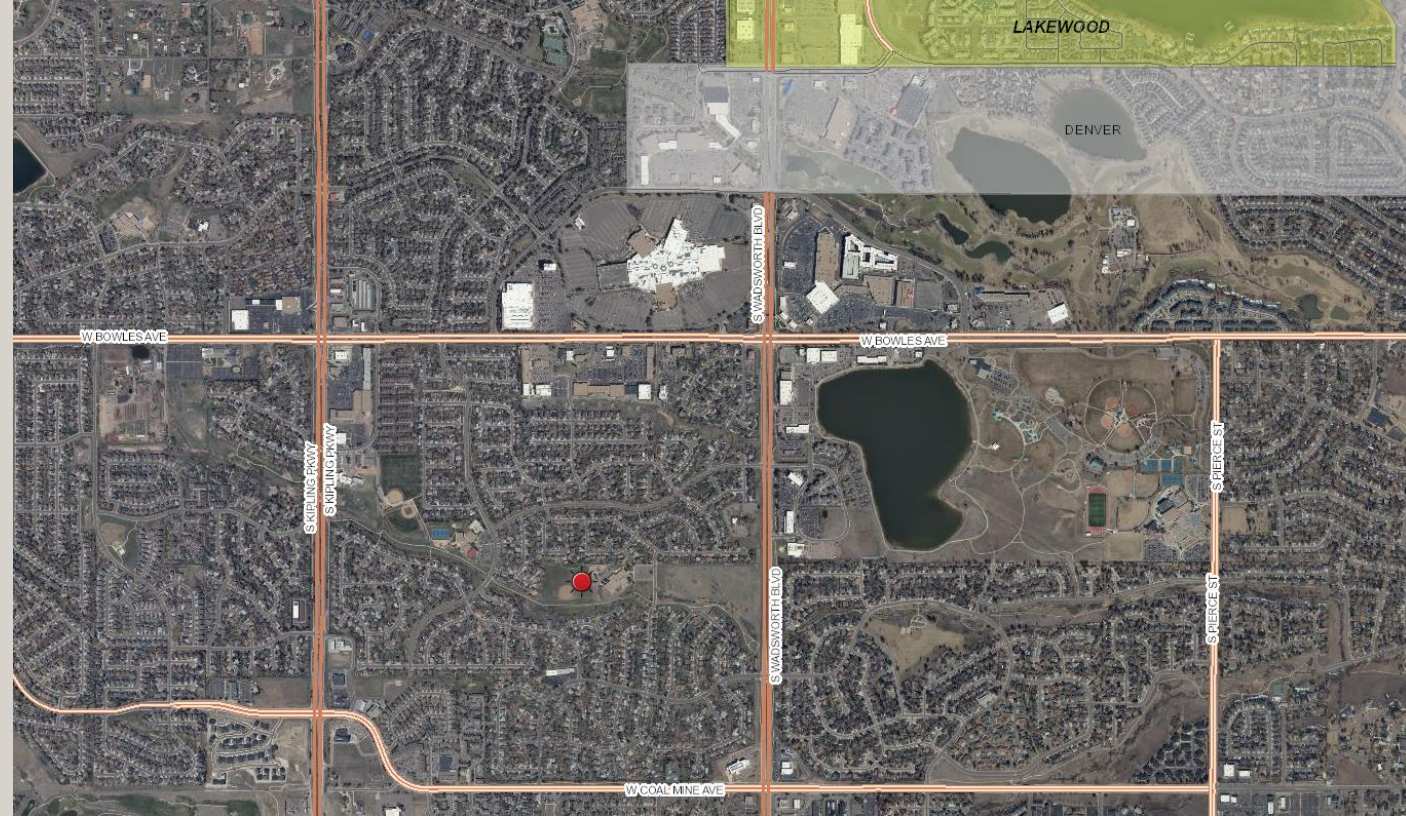
[6317 S Estes St, Littleton](#)

Characteristics

- 10 Acres
- Limited access to arterial road
- Existing greenbelt/floodway
- High Community Concern
- Adjacent to floodplain

Recommendation

- School District Lease
- Continue evaluation of other uses
 - Unique Housing Ideas
 - Open Space/Recreation



Bergen Meadow

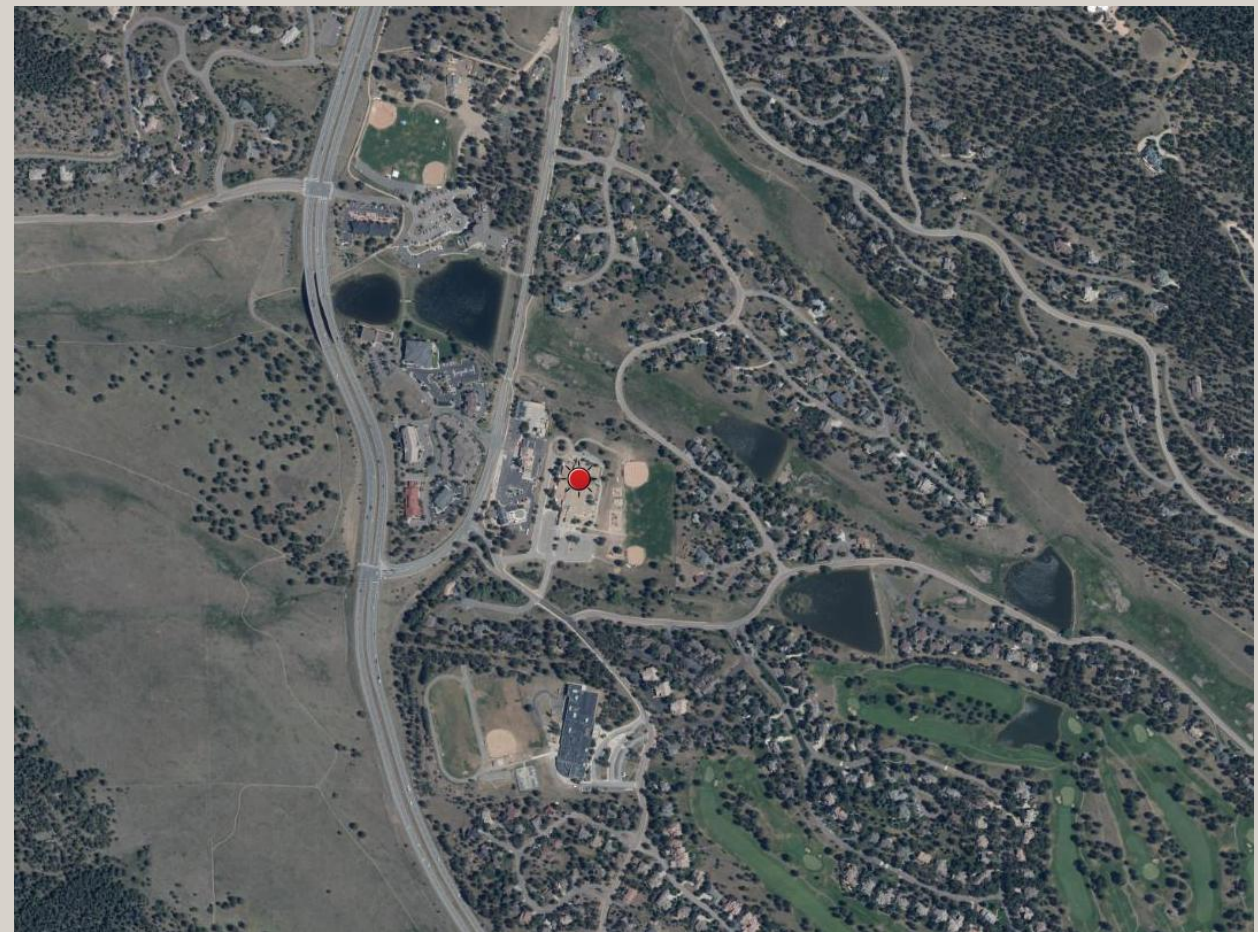
[1928 Hiwan Dr., Evergreen](#)

Characteristics

- 13.3 acres
- Access to arterial road
- Ballfields grant encumbrance

Recommendation

- Continue Collaboration ELF, FHA, EPRD
 - Senior housing relocated, future workforce housing
 - Use of existing ball fields, onsite parking
- Develop Agreement
 - Management Terms
- Formal Outreach Plan





JEFFERSON
COUNTY COLORADO

Thank you for
your time!

