



# JEFFCO TRAILS PLAN UPDATES

June 10, 2025



**JEFFERSON**  
COUNTY COLORADO  
Open Space



# JEFFCO TRAILS PLAN BACKGROUND

**Adopted in October 2020**

**Purpose is to create an interconnected and comprehensive trail system throughout the County**

- Takes a holistic approach, focusing on hard surface and natural surface trails beyond the boundaries of JCOS Parks

**Facilitated by JCOS and under the direction of the Jeffco Trails Council, with collaboration from local agencies, park and recreation districts, and non-profit partners**

**Aims to improve safety, connectivity, and equitable access**

# PROPOSED UPDATES

- **Jeffco Trails Plan Appendix A: Trail Definitions, Standards, and Recommended Maintenance Standards**
  - Encourage the development of durable and sustainable trails to promote a consistent and enjoyable visitor experience along trails within Jefferson County
  - Provide partners with a technical resource for developing and maintaining trails and informing what types of projects are eligible through the Trails Partnership Program
- **The updated Jeffco Trails Plan Implementation Resources document**
- **An interactive online map dashboard of proposed trail projects**



# TRAIL STANDARDS

Includes construction details, illustrations, and a high-level overview of trail standards and recommended maintenance standards for the following types of trails:

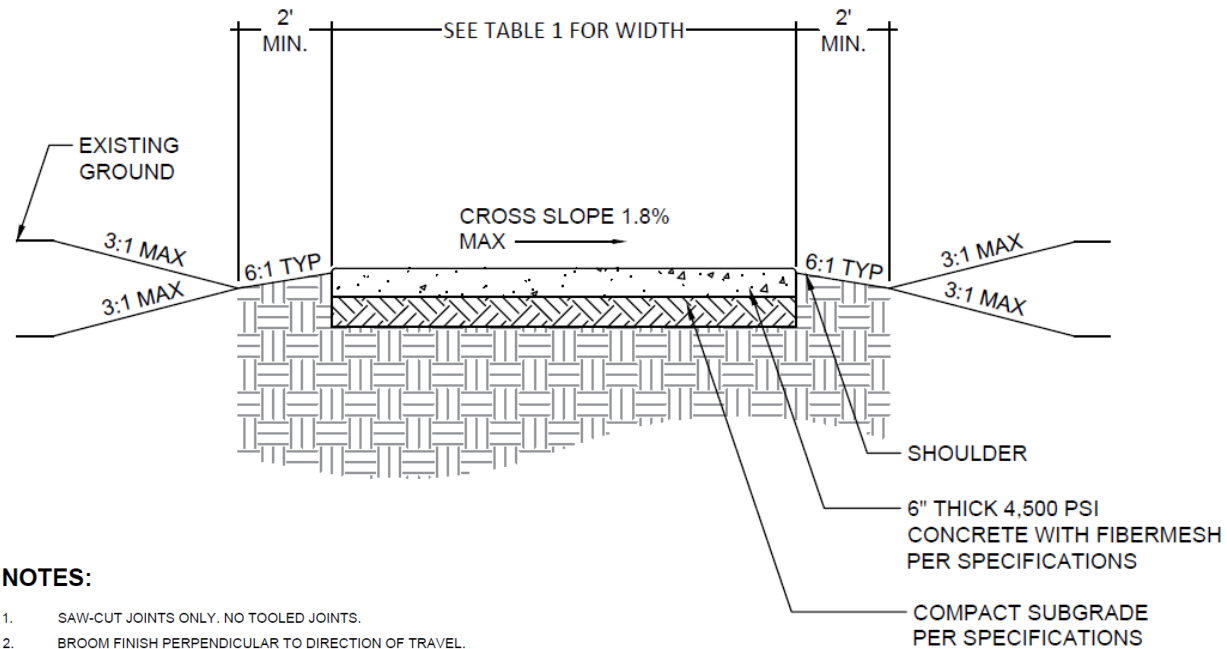
- Regional and Local Trails
- Hard Surface Trails
- Soft Surface Trails
- Natural Surface Trails







# REGIONAL HARD SURFACE TRAIL



## NOTES:

1. SAW-CUT JOINTS ONLY. NO TOOLED JOINTS.
2. BROOM FINISH PERPENDICULAR TO DIRECTION OF TRAVEL.
3. MAINTAIN 2' OF CLEAR SPACE FROM REQUIRED SIGNS AND INFRASTRUCTURE, WHERE POSSIBLE.



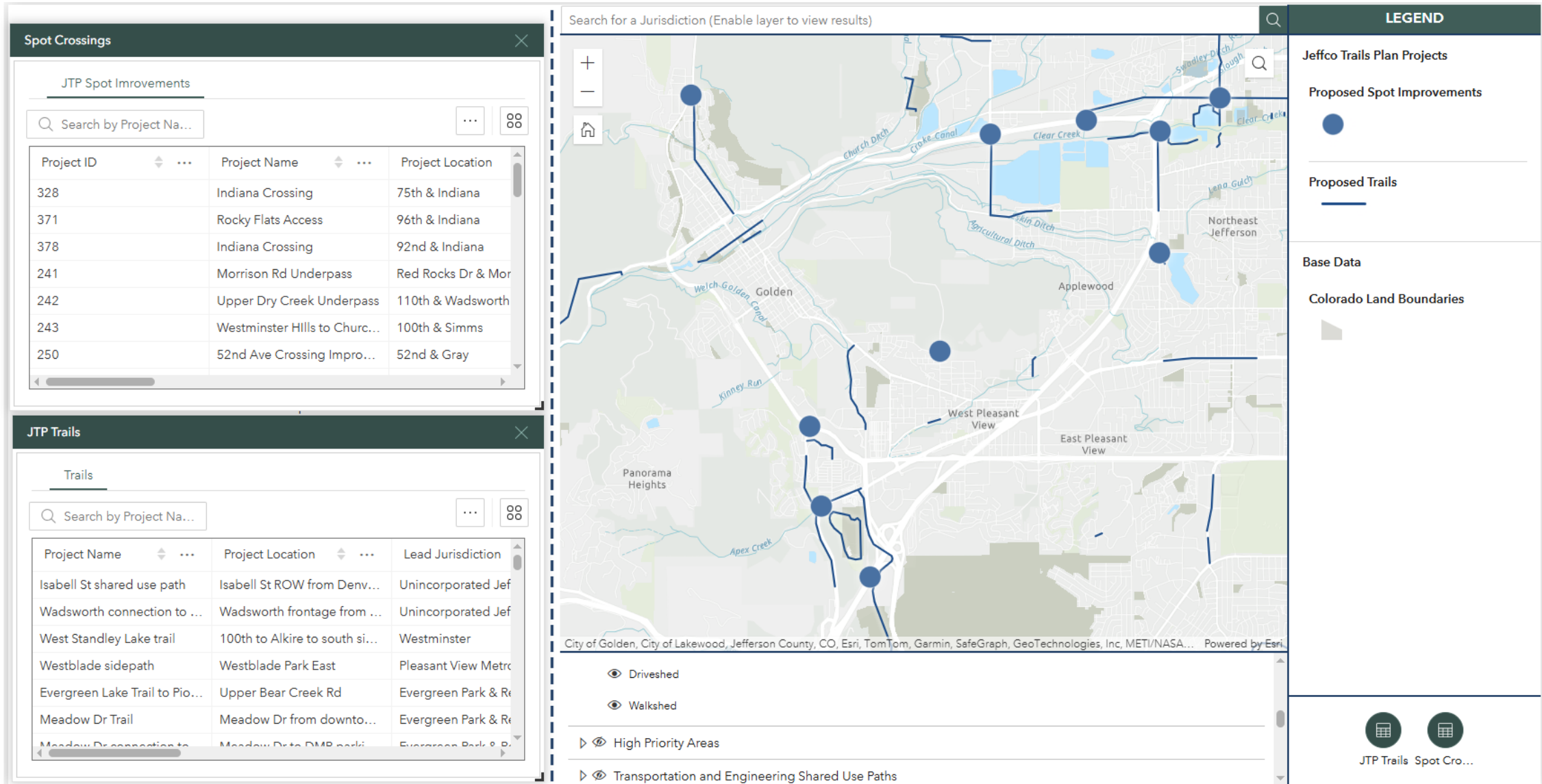
Shoulder	Hard or Soft Surface Trail	Shoulder	Buffer from Vehicular Traffic	Existing Roadway
----------	----------------------------	----------	-------------------------------	------------------

	Regional Trails are multi-jurisdictional, connecting communities or connecting to the greater regional trail network and regional destinations.			Local Trails are located within a single community, jurisdiction, or park and green space.		
	Regional Hard Surface Trail	Regional Soft Surface Trail	Regional Natural Surface Trail	Local Hard Surface Trail	Local Soft Surface Trail	Local Natural Surface Trail
<b>Tread width</b>	10' min	10' min	2' min	8' min	4' min	1' min
<b>Shoulder width</b>	2' graded shoulder on both sides, can be native or imported material	2' graded shoulder on both sides, can be native or imported material	-	-	-	2' graded shoulder on both sides, can be native or imported material
<b>Surface</b>	Concrete, 6" thick with fiber mesh and saw cut joints	Native or imported material, such as crusher fines or road base	Native, limited grading	Concrete, 6" thick with fiber mesh and saw cut joints	Native or imported material, such as crusher fines or road base	Native, limited grading
<b>Overhead Clearance</b>	10' min	10' min	8' min	10' min	10' min	8' min
<b>Horizontal Clearance</b>	2' clear width	2' clear width	-	1' clear width	-	-
<b>Proximity to vehicular traffic</b>	Grade separated with 10' min horizontal buffer. Where buffer is not possible, additional 2' of trail width clear of required signs.	Grade separated with 8' min horizontal buffer. Where buffer is not possible, additional 2' of trail width clear of required signs.	4' min horizontal buffer	Grade separated with 10' min horizontal buffer. Where buffer is not possible, additional 2' of trail width clear of required signs.	Grade separated with 4' min horizontal buffer. Where buffer is not possible, additional 2' of trail width clear of required signs.	4' min horizontal buffer
<b>Permitted Uses</b>	Shared use	Shared use	Shared use is preferred but may be single use if there are constraints	Shared use	Shared use is preferred but may be single use if there are constraints	Shared use or single use
<p>All trails should be located outside of the ROW, if possible.  All trails must adhere to local planning and development codes.  All regional trails must adhere to ABA/PROWAG or AASHTO standards.  Refer to Jefferson County Transportation &amp; Engineering and Planning &amp; Zoning standards for non-JCOS projects in unincorporated Jefferson County.</p>						

Table 1. Trail Design Standards

## Trail Design Standards

# MAPPING UPDATES





# QUESTIONS?

Emily Guffin  
[eguffin@jeffco.us](mailto:eguffin@jeffco.us)

