

# RTD Partnership Program Grant

## Trails and Access Program



*WesTracks Shuttle Pilot Program*

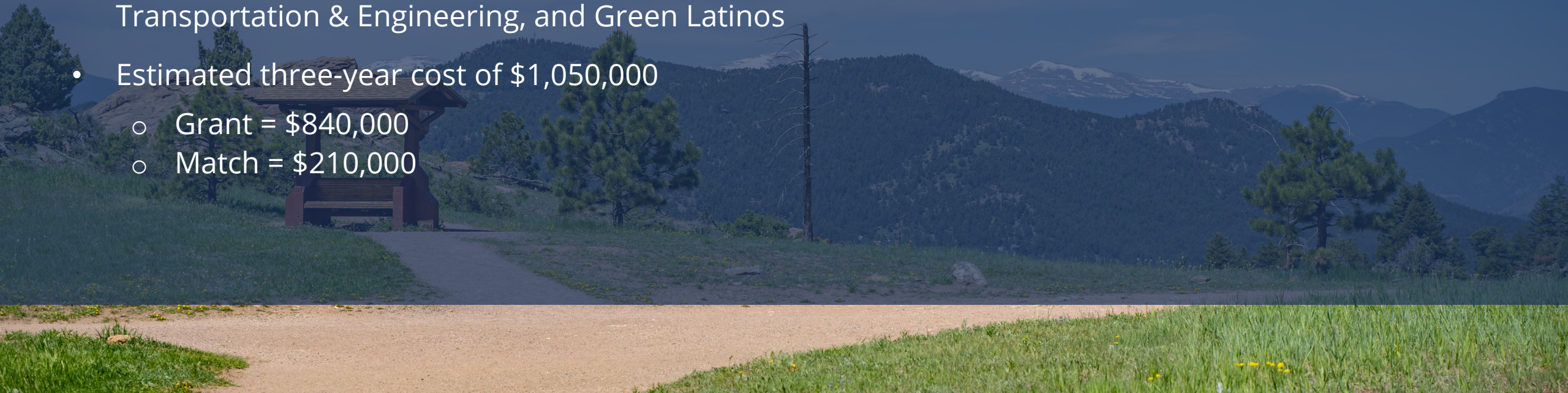


**JEFFERSON**  
COUNTY COLORADO  
Open Space



# RTD Partnership Program

- Support for WesTracks shuttle pilot program 2026-2028
- Goal is to improve equitable access to park and recreation opportunities; reduce parking congestion at trailheads and within downtowns; and enhance the use of climate-conscious infrastructure
- Partners include City & County of Denver (DPR, DOTI), Town of Morrison, Dinosaur Ridge, Jeffco Transportation & Engineering, and Green Latinos
- Estimated three-year cost of \$1,050,000
  - Grant = \$840,000
  - Match = \$210,000



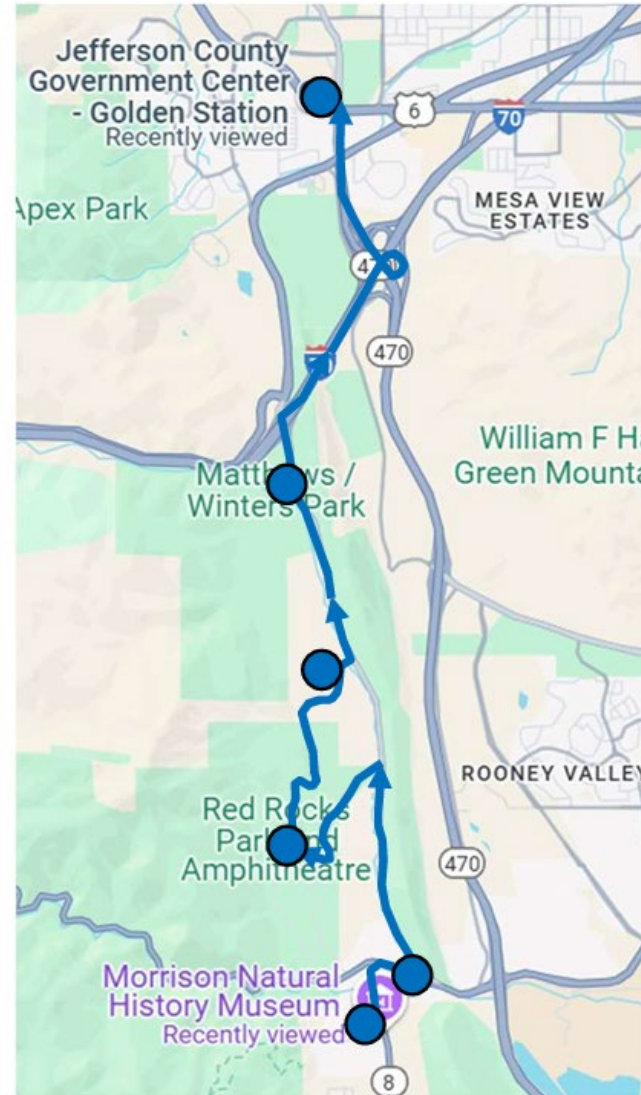


# RTD Partnership Program

## WesTracks Shuttle

- Shuttle will operate at a 15-minute frequency from 9am-5pm on Fridays, Saturdays, Sundays, and holidays from Memorial to Labor Day
- Shuttle stops include:
  - Jeffco Gov't Center
  - Matthews/Winters Park
  - Martin Lockley @ Dinosaur Ridge
  - Red Rocks Trading Post
  - Morrison Downtown
  - Morrison Natural History Museum

Northbound Path



Southbound Path

