



# EVERGREEN PARK & RECREATION DISTRICT

## BOARD AGENDA

President Betsy Hays \* First Vice President Mary McGhee \* Second Vice President Don Rosenthal  
 Treasurer Peter Eggers \* Secretary Nina Armah

### July 30, 2024


**At Buchanan Park Recreation Center  
 32003 Ellingwood Trl, Evergreen, CO  
 80439**

**REGULAR MEETING – 5:00 P.M.**

Agenda Questions: Please call Evergreen Park & Recreation District at (720) 880-1020.  
 Public documents received after publication of this agenda and considered by the Board of Directors in its deliberation may be available for inspection in the Evergreen Park & Recreation District's Administrative Office during normal business hours.  
 Board meetings are held on alternate months at the Buchanan Park Recreation Center or Wulf Recreation Center unless otherwise noted.

	Approximate Start Times
1. CALL TO ORDER / ROLL CALL FOR REGULAR MEETING (0 min.)	5:00 P.M.
2. ANNOUNCEMENTS & CHANGES TO THE AGENDA & CONFLICT OF INTEREST DISCLOSURE (5 min.)	5:00 P.M.
<b>3. JUNE 25, 2024 REGULAR BOARD MEETING MINUTES (5 min.)</b>	5:05 P.M.
4. GENERAL PUBLIC COMMENT (15 min.)  At this time, those in the audience are encouraged to address the Board on any item not already included in tonight's agenda. Board action is not taken on issues raised during Public Comment. Individuals are limited to 5 minutes. A group spokesman is limited to 10 minutes. Speakers must provide their legal names and whether or not they live within district boundaries.	5:10 P.M.
<b>5. CONSENT AGENDA (0 min.)</b>  Wulf Playground   Buchanan Pool Surfacing & Play Structure	5:25 P.M.
<b>6. DISCUSSION ITEMS FROM CONSENT AGENDA (15 min.)</b>	5:25 P.M.
7. Q2 2024 FINANCIALS (20 min.)	5:40 P.M.
8. Q2 2024 PARTICIPANT & PASS USAGE (15 min.)	6:00 P.M.
<b>9. BY LAW UPDATES &amp; ART POLICY REVIEW (30 min.)</b>	6:15 P.M.
10. OLD BUSINESS & UPDATES (5 min.)  Executive Director Update	6:45 P.M.
11. INITIAL DRAFT OF THE AUGUST 2024 BOARD MEETING AGENDA (5 min.)	6:50 P.M.

*I hereby certify the attached public meeting agenda was posted 24 hours prior to the noted meeting:*

 , 7/24/24



## MEMORANDUM

To: Evergreen Parks & Recreation District Board of Directors  
From: Brian Tucker, Recreation Manager  
Bob Schmitz, Facility Operations Manager  
CC: Cory Vander Veen, Executive Director  
RE: Parks – Playground Replacement  
Date: July 30, 2024

---

**Staff Recommendation:** Staff recommends contracting with A to Z Recreation for the Parks – Playground Replacement project at Wulf Park playground. The project will include the removal and disposal of the existing playground equipment, then the installation of the BCI Burke Equipment custom play structure including 360 Loop, 2-bay single post swings with Freedom ADA seat, SandPlay Pieces and StemPlay Panels. The delivery and installation of the new Poured In Place surface for the playground area.

**Introduction:** Staff has been working with A to Z Recreation on this project since 2023 to get the playground replaced. A to Z is working with Sourcewell to help the District to get the necessary costs estimate. Sourcewell allows Governmental agencies to comply with Special District procurement requirements, to identify qualified vendors of commodities, goods and services, to relieve the burden of the governmental purchasing function.

**Fiscal Impact:** In the 2024 CIP budget we have \$200,000.00 allotted for this project. A to Z Recreation has presented a proposal for this project at a cost of \$163,795.10. This includes the cost of the new equipment at \$60,464.70, the cost for the new poured in place surfacing at \$60,828.00 and the installation of the new play equipment and poured in place surfacing of \$42,502.40, for a total cost of \$163,795.10. The Colorado Department of Early Childcare (CDEC) awarded EPRD a grant in 2023 for Children’s Programs and a portion of the grant (\$75,000) was approved to be used towards this project.

**Background:** Parks Ops will be helping in this project to help keep the cost of the project under budget. Parks will be removing some of the existing play features we will not be using in the new playground and also removing and disposing of the existing playground surface.

**Board Action:** The EPRD Board approves funding and staff to proceed with A to Z Recreation for the Wulf playground project. The Board also approves the \$200,000 to be pulled from Jefferson County Developer funding that is dedicated to EPRD.

**Appendix A:** See attachments

---

## DESIGN SUMMARY

AtoZ Recreation is very pleased to present this Proposal for consideration for the Wulf Park located in Evergreen. BCI Burke Company, LLC has been providing recreational playground equipment for over 100 years and has developed the right mix of world-class capabilities to meet the initial and continuing needs of the City of Evergreen. We believe our proposal will meet or exceed your project's requirements and will deliver the greatest value to you.

The following is a summary of some of the key elements of our Proposal:

- Project Name: Wulf Park
- Project Number: 136-183542-2
- User Capacity: 84
- Age Groups: 2 to 12
- Dimensions: 71' 0"x58' 8"
- Designer Name: Leah Kirssin

AtoZ Recreation has developed a custom playground configuration based on the requirements as they have been presented for the Wulf Park playground project. Our custom design will provide a safe and affordable playground environment that is aesthetically pleasing, full of fun for all users and uniquely satisfies your specific requirements. In addition, proposal # 136-183542-2 has been designed with a focus on safety, and is fully compliant with ASTM F1487 and CPSC playground safety standards.

We invite you to review this proposal for the Wulf Park playground project and to contact us with any questions that you may have.

Thank you in advance for giving us the opportunity to make this project a success.



AtoZ Recreation

PO Box 626 | Littleton, CO 80160 | 303-601-7245

Proposal 136-183542-2 | 5/13/2024







3D Designer: Kendra







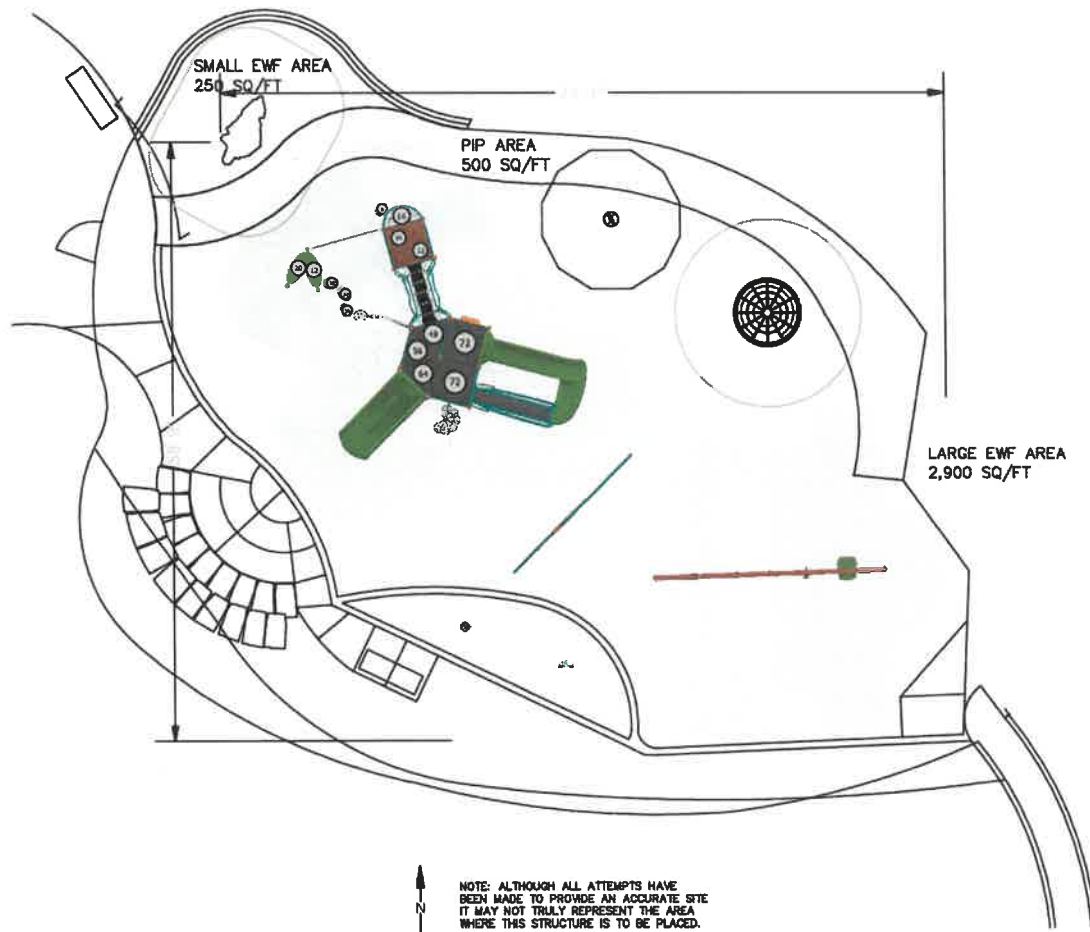




**COLOR KEY**

- REDWOOD
- AQUA
- ORANGE
- LIME
- GRANITE
- SILVER
- ORANGE/BLACK
- LIME/BLACK
- GRAY/BLACK





**SERIES** Burke Basics | Nucleus

**GROUP:** 2-12 Structure | Stern Play/Freestanding  
**DESIGNED FOR AGES:** 2 to 12

**Wulf Park**

Evergreen, CO 80439



BCEBURKE COMPANY, LLC | PO BOX 549 FOND DU LAC, WI 54936-0549 | 920.921.9220 | BCEBURKE.COM

**SITE PLAN VIEW**

05/13/2024

**Atoz Recreation**

136-183542-2

Designer: Leah Krissin

**OVERALL BOUNDING OF USE ZONES**

Area: 4168.9 sq.ft.  
 Perimeter: 259.4 ft.

**STRUCTURE SIZE:** 9"x71' 1"  
**POST SIZE(S):**

\*\*The space requirements shown here are to ASTM standards. Requirements for other standards may be different.

**PLAYGROUND ACCESSIBILITY (Provided/Required)**

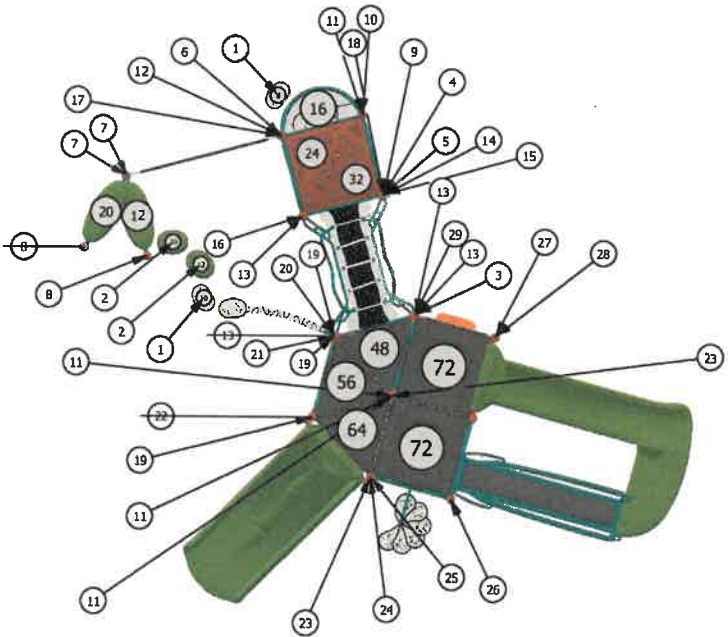
TOTAL EVENTS	ELEVATED EVENTS	TRANSFER ACCESSIBLE EVENTS	RAMP ACCESSIBLE EVENTS	GROUND EVENTS	TYPES OF GROUND EVENTS
27	11 / 6	7 / 0	0 / 0	18 / 4	8 / 3

The use and layout of play components identified in this plan conform to the CPSC guidelines. U.S. CPSC recommends the separation of age groups in playground layouts.

Warning: Accessible safety surfacing material is required beneath and around this equipment that is compliant with ASTM, CPSC, and ADAAG requirements.



ITEM	COMP.	DESCRIPTION
1	580-1364	LIL NOVO BEAN STEP
2	560-0052	FLYLOW STEP POD
3	370-1715	MESA CLIMBER
4	270-0301	SPLIT SQUARE PLATFORMCLOSURE PLATE
5	570-2723	PINWHEEL POST MOUNTED SPINNER
6	370-1651	TRANGO CLIMBER, POST TO POST
7	470-0128	FLYLOW POD
8	560-2619	FREESTANDING GRAB BAR
9	570-2662	CRAZY MAZE 2-SIDED PLAY PANEL
10	470-0075	CRESCENT PLATFORM
11	270-0009	8" CLOSURE PLATE, ELLIPSE
12	270-0122	EVOLUTION OFFSET ENCLOSURE
13	270-0120	EVOLUTION UNITARY ENCLOSURE
14	470-0015	EVOLUTION SQUARE ROOF
15	470-0006	EVOLUTION BOTTOM ROOF SUPPORT, SINGLE
16	470-0008	EVOLUTION SIDE ROOF SUPPORT, LEFT
17	470-0003	EVOLUTION TOP ROOF SUPPORT, SINGLE
18	470-0009	EVOLUTION SIDE ROOF SUPPORT, RIGHT
19	270-0129	TRIANGLE PLATFORM
20	370-1720	LIL NOVO BALANCE BEAM LINK
21	370-0863	TREE BRANCH CLIMBER 56"
22	470-0803	CONTOUR SLIDE, 64"-72"
23	270-0130	SQUARE PLATFORM
24	370-1673	PETAL STEP CLIMBER 64"-72"
25	270-0121	EVOLUTION STANCHION
26	470-0966	360 LOOP
27	570-1858	3-IN-A-ROW PANEL, ABOVE PLATFORM
28	570-0557	COUNTER PANEL, BELOW PLATFORM
29	270-0299	ABSTRACT PLATFORM LADDER 24"



**SERIES** Burke Basics | Nucleus

**GROUP:**  
2-12 Structure

**DESIGNED FOR AGES:**  
2 to 12

**Wulf Park**

Evergreen, CO 80439

**Burke**  
PLAY THAT MOVES YOU

BCI BURKE COMPANY, LLC | PO BOX 549 FOND DU LAC, WI 54936-0549 | 920.921.9220 | BCI@BURKE.COM

**COMPONENT VIEW**

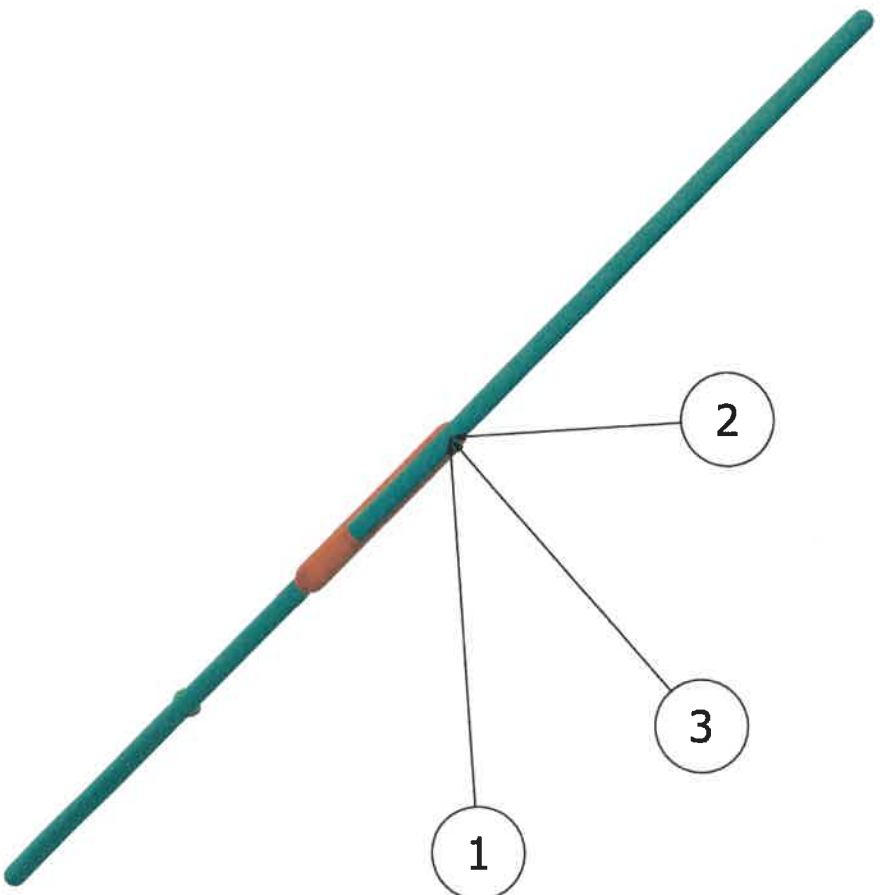
05/13/2024

**Atoz Recreation**

136-183542-2

Designer: Leah Kressin

ITEM	COMP.	DESCRIPTION
1	560-1703	STEMPLAY SHORT ACTIVITY FRAME
2	560-2685	STEMPLAY MOMENTUM
3	560-2690	STEMPLAY ORBIT



**SERIES** Burke Basics

**GROUP:** Stern Play

**DESIGNED FOR AGES:** 2 to 12

**Wulf Park**  
Evergreen, CO 80439

**05/13/2024**

**AtoZ Recreation**  
136-183542-2  
Designer: Leah Kirsish

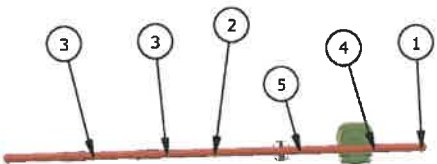
**Burke**  
PLAY THAT MOVES TOLL

BCL BURKE COMPANY, LLC | PO BOX 549 FOND DU LAC, WI 54936-0549 | 920.921.9220 | BCLBURKE.COM

**COMPONENT VIEW**



ITEM	COMP.	DESCRIPTION
1	550-0201	SINGLE POST SWING ASSEMBLY 5" OD
2	550-0202	SINGLE POST SWING ADD-ON 5" OD
3	550-0111	BELT SEAT, 8' SINGLE, STD CHAIN
4	550-0171	FREEDOM SWING SEAT, 8' BEAM, STD CHAIN
5	550-0099	TOT SEAT, 7' & 8' SINGLE, STD CHAIN
6	580-0237	BALANCE SCALE
7	580-0344	TWIST & SWIRL



**SERIES** Burke Basics

**GROUP:**  
Freestanding

**DESIGNED FOR AGES:**  
2 to 12

**Wulf Park**

Evergreen, CO 80439

**Burke**  
PLAY THAT MOVES YOU

05/13/2024

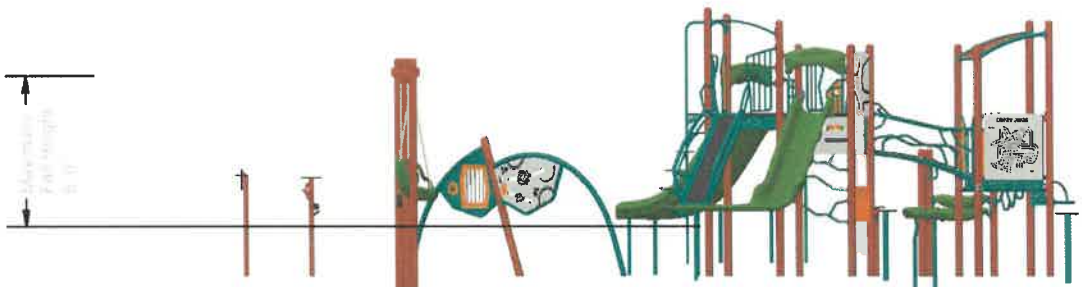
**Atoz Recreation**

136-183542-2

Designer: Leah Krassin

BCI BURKE COMPANY, LLC | PO BOX 549 FOND DU LAC, WI 54936-0549 | 920.921.9220 | BCI@BURKE.COM

**COMPONENT VIEW**



**SERIES** Burke Basics | Nucleus

**GROUP:** 2-12 Structure|Stem Play|Freestanding

**DESIGNED FOR AGES:**  
2 to 12

**Wulf Park**  
Evergreen, CO 80439



**ELEVATION VIEW**  
05/13/2024

**AloZ Recreation**  
136-183542-2  
Designer: Leah Kirssin

BCL BURKE COMPANY, LLC | PO BOX 548 FOND DU LAC, WI 54936-0549 | 920.924.9220 | BCLBURKE.COM



## MEMORANDUM

To: Evergreen Parks & Recreation District Board of Directors  
From: Bob Schmitz, Facility Operations Manager  
CC: Cory Vander Veen, Executive Director  
RE: BPRC – Aquatics Play Features & Pool Surface Project  
Date: July 30, 2024

---

**Staff Recommendation:** Staff recommends purchasing the 5 new water play features from Vortex and hiring Colorado Hardscapes to demo the pool floor, reroute the plumbing for the new water play features, set the anchors, replace the concrete with the water stops in place and install the new water play features and then replace the plaster for the pool surface and the indoor hot tub for the BPRC – Aquatics Play Features & Pool Surface Project of 2024

**Introduction:** The District issued an RFP for this project on June 10, 2024, then conducted a mandatory pre-bid meeting on June 20, 2024. We had three companies attend the pre-bid meeting. We received two proposals on July 17.

A team of five staff evaluated the two proposals based on these criteria:

- Competitiveness of Fees
- Relevance and quality of project examples
- Ability to deliver within project timeline and within budget
- Positive comments from references
- The relative strength and experience of the management/staff
- Warranty of the product and labor provided
- Other information provided

**Fiscal Impact:** Cost for the five new water play features from Vortex is \$62,034.50. Colorado Hardscapes will demo the pool floor, reroute plumbing for the new water play features, set anchors, replace the concrete with water stops in place, install the new water play features, then replace the plaster surface for the pool surface, and the indoor hot tub is \$320,735.00. There is a possible savings of \$36,895 for plumbing if they can intercept it at the pool and no demo of deck is needed. The total cost for this project is \$382,769.50. If we do not need to demo the deck the cost will be \$345,874.50. This 2024 CIP project has \$275,000 allocated for funding this project. Bids and material costs have increased substantial from when staff quoted this one year ago. The other main increase is that the local company that preliminary quoted

this is no longer operating. Staff would like to reappropriate the saving that will be from the Marshdale Pickleball projects of up to \$125,000 to be used for this project increase.

**Background:** This CIP project has been in the budgets since 2015, Parts of the existing Play feature no longer work, cannot find parts for it. The pool surface is safety hazard (slipping) and have had dozens of incidents from users. In the Strategic Plan there were many items in the District that were in the category of “taking care of what we have”. The replacement of the existing play water and the re-plastering of the pool surface falls directly into that category. This project would be scheduled to start mid-August after summer swim lessons and summer camp were done for the season. This is the slowest part of the year for the Buchanan pool. Staff will try to keep the hot tub, cold plunge, and suana open during certain times of this project.

**Board Action:** The EPRD Board approves this project and additional funding to complete this project for up to \$382,769.50. The Board approves staff to proceed with Colorado Hardscapes for the pool Buchanan aquatics project.

**Appendix A:** See attachments





All 3D renders shown are for illustration purposes only. Actual colors, textures and finishes may differ from renders.





All 3D renders shown are for illustration purposes only. Actual colors, textures and finishes may differ from renders.





All 3D renders shown are for illustration purposes only. Actual colors, textures and finishes may differ from renders.





All 3D renders shown are for illustration purposes only. Actual colors, textures and finishes may differ from renders.

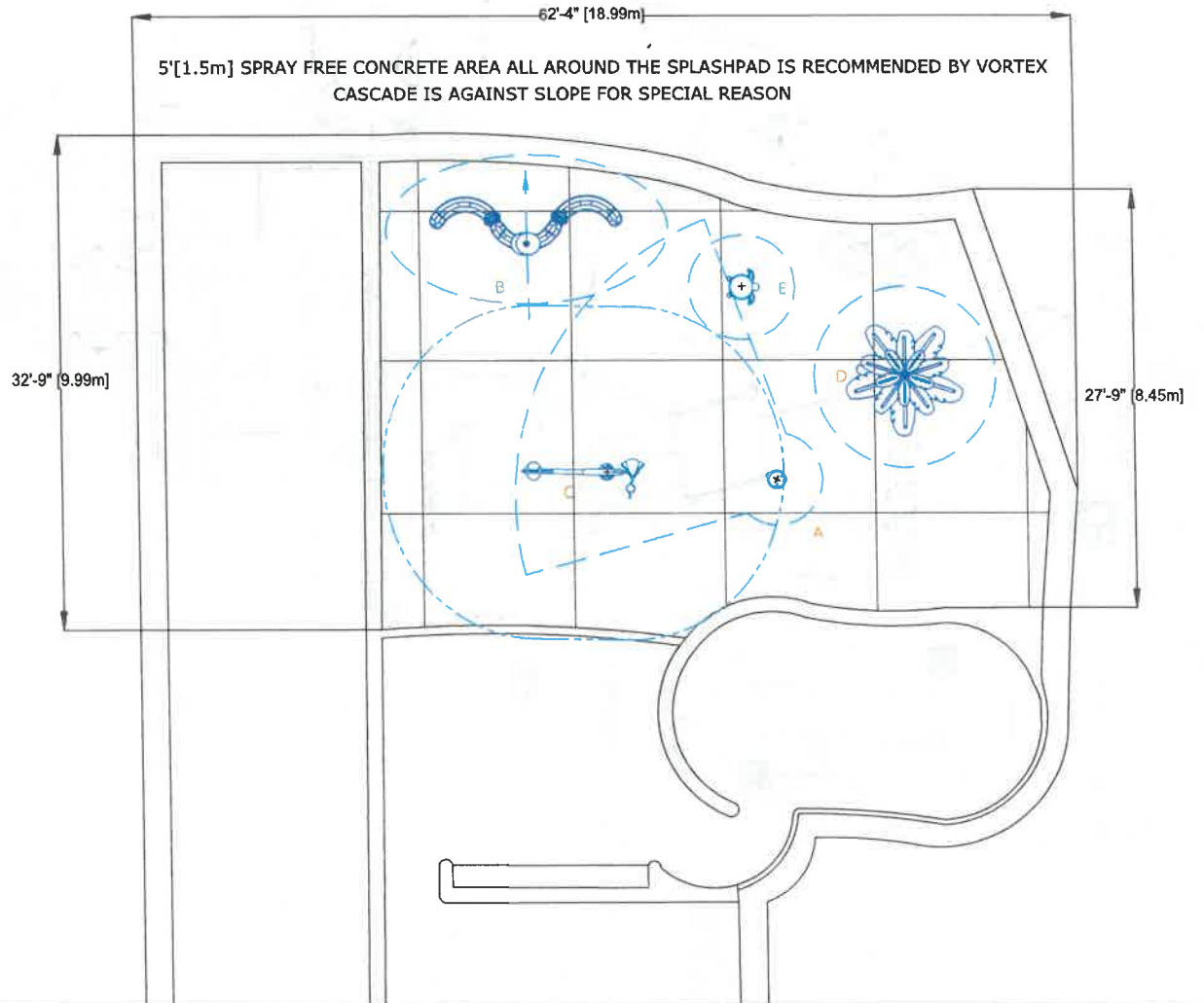


**SPLASHPAD DIMENSION**

TOTAL AREA : 1186 ft<sup>2</sup> 110m<sup>2</sup>  
 SPRAY AREA : 1186 ft<sup>2</sup> 110m<sup>2</sup>  
 GRID SIZE : 10 x 10ft 3 x 3m

**PRODUCT LEGEND**

REF	PRODUCT	QTY	GPM	LPM
A	Bear Cannon VOR 7602	1	5	18.9
B	Cascade River VOR 7249	1	5	18.9
C	Flower N°5 VOR 7557	1	8	30.2
D	Pine Tree VOR 8610	1	25	94.5
E	Turtle N°2 VOR 7216	1	12.5	47.3
<b>TOTAL</b>		<b>5</b>	<b>55.5</b>	<b>209.8</b>



Buchanan Park Recreation Center Pool Play - Evergreen, CO

41091 Version\_A

October 13, 2023



SPLASHPAD LAYOUT DRAWING



SCALE :1/8":1'  
 (17" X 17" sheet size)